



The Role of Dining and DEI in Student Union Design: UNLV Case Study

Sojo Alex, *Envision Strategies*

Jan Van den Kieboom, *Workshop Architects*



**UNLV IS THE MOST
DIVERSE UNIVERSITY
IN THE UNITED STATES**

Engagement Matters

Research Reveals

Leverage Dining

Inclusion Strategies









Engagement Matters

Research Reveals

Leverage Dining

Inclusion Strategies

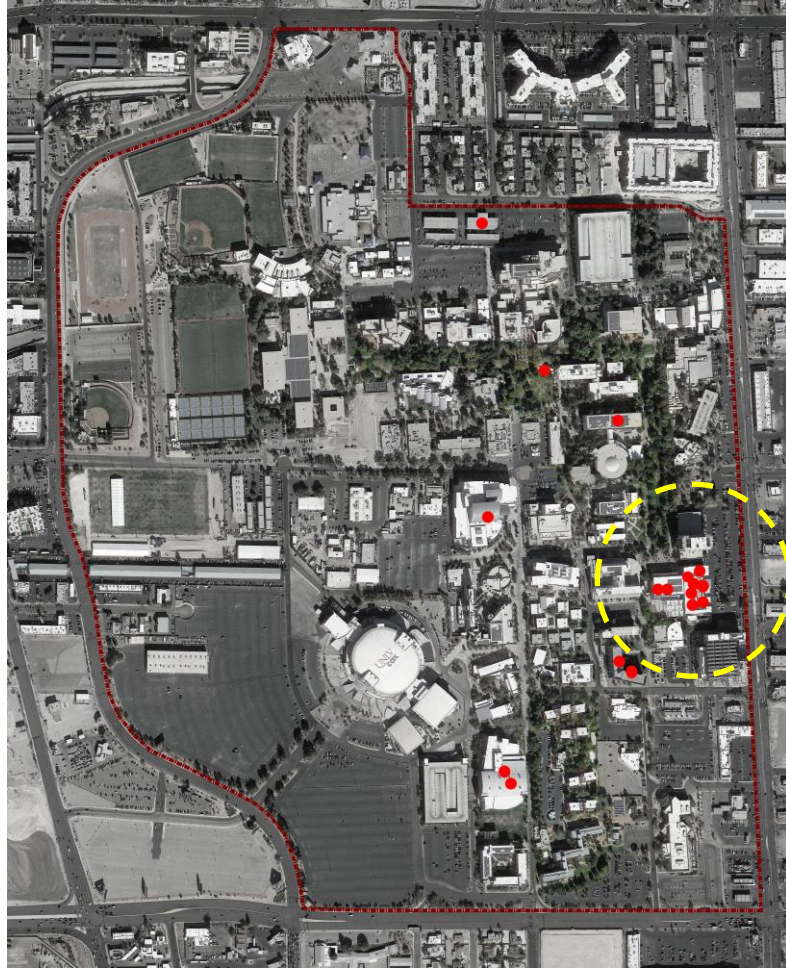
O

K

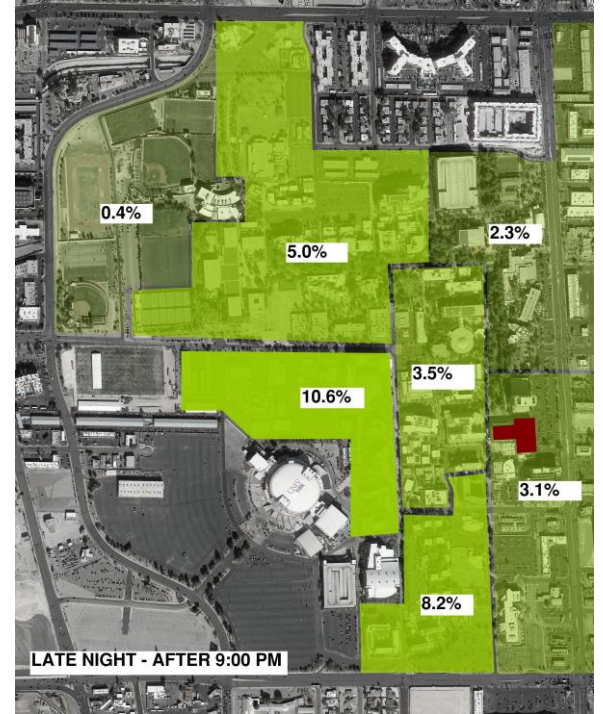
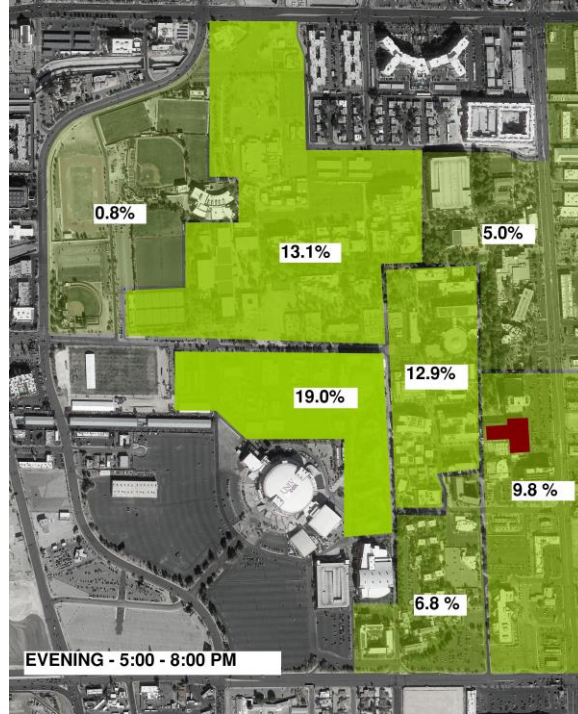
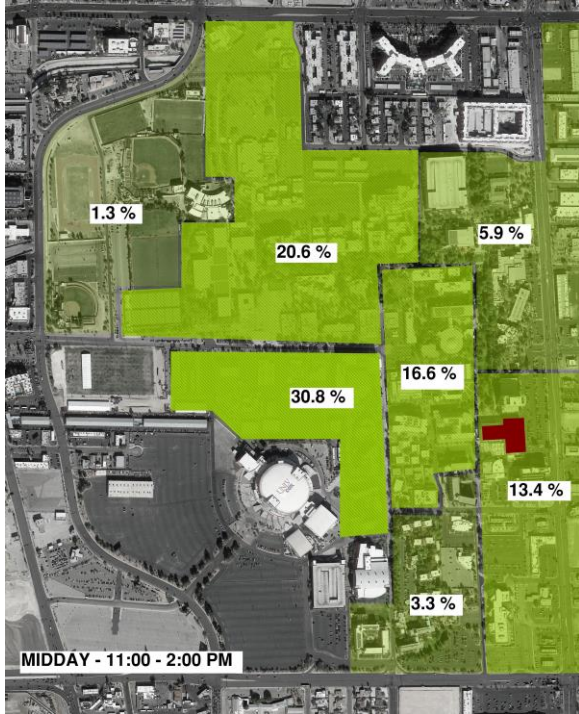


Existing Venues

Majority of campus is severely underserved by food.

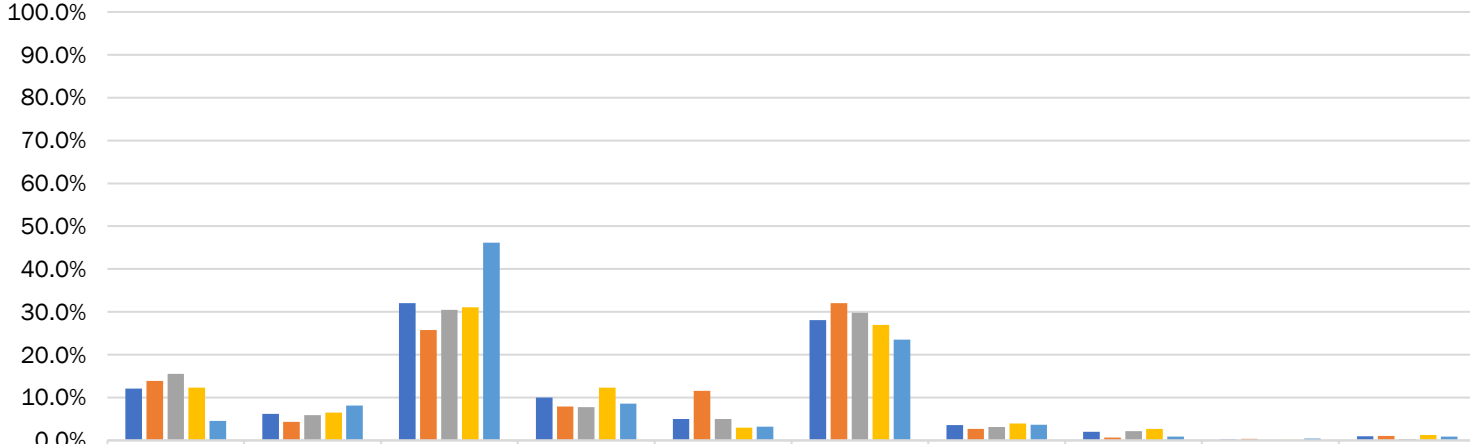


People Distribution



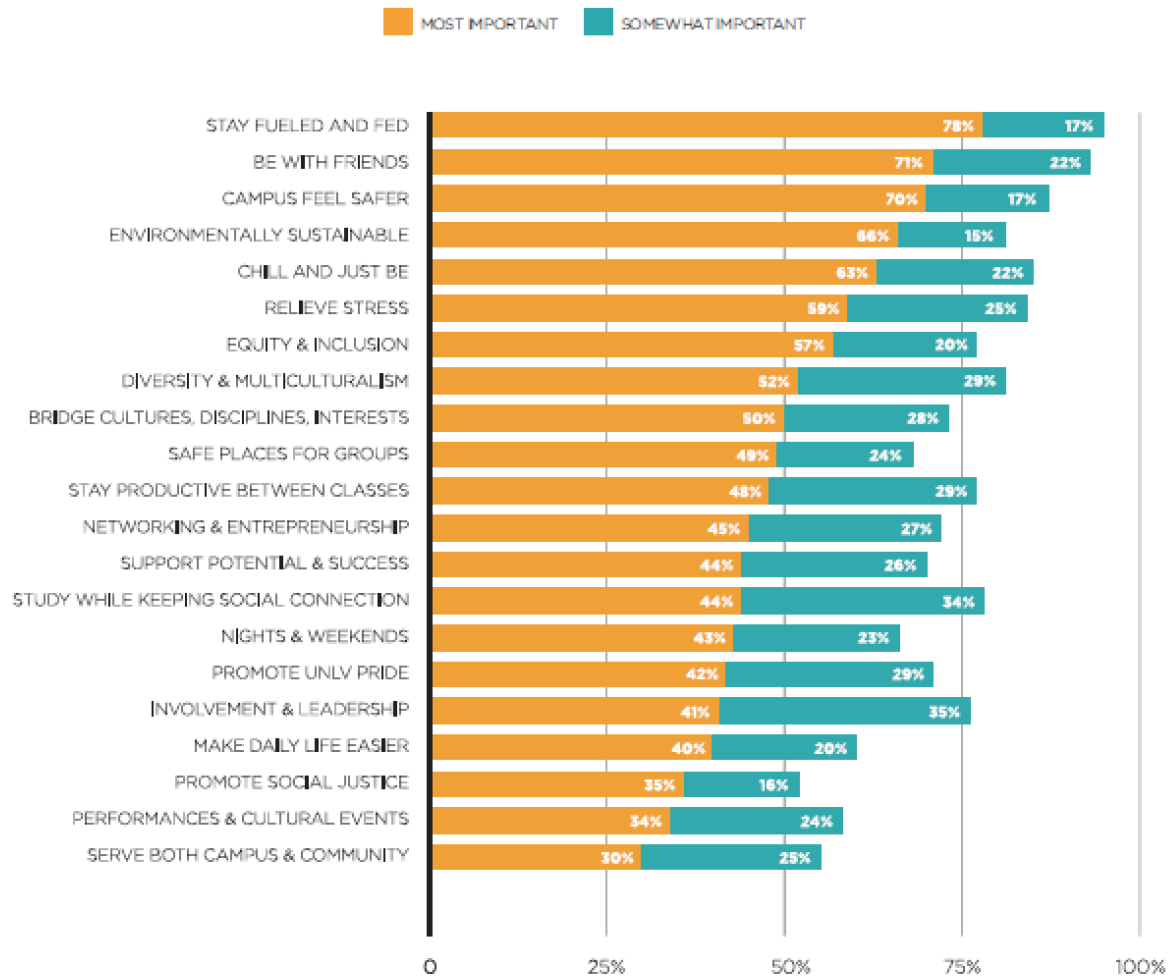
Lunch Time

When you are on campus, what do you typically do for lunch?



	Skip this meal	Prepare at home	Bring from home	Purchase off campus	Eat on campus at Dining Commons	Purchase at Student Union	Purchase elsewhere on campus	Purchase at a food truck	Obtain by delivery	Other
Lunch Respondents (1575)	12.1%	6.2%	32.1%	10.0%	5.0%	28.1%	3.6%	2.0%	0.2%	1.0%
Freshman (303)	13.9%	4.3%	25.7%	7.9%	11.6%	32.0%	2.6%	0.7%	0.3%	1.0%
Sophomore (322)	15.5%	5.9%	30.4%	7.8%	5.0%	29.8%	3.1%	2.2%	0.0%	0.3%
Upperclass Undergrad (709)	12.3%	6.5%	31.0%	12.3%	3.0%	26.9%	4.0%	2.7%	0.1%	1.3%
Graduate (221)	4.5%	8.1%	46.2%	8.6%	3.2%	23.5%	3.6%	0.9%	0.5%	0.9%

Student Needs



Findings

Food Security

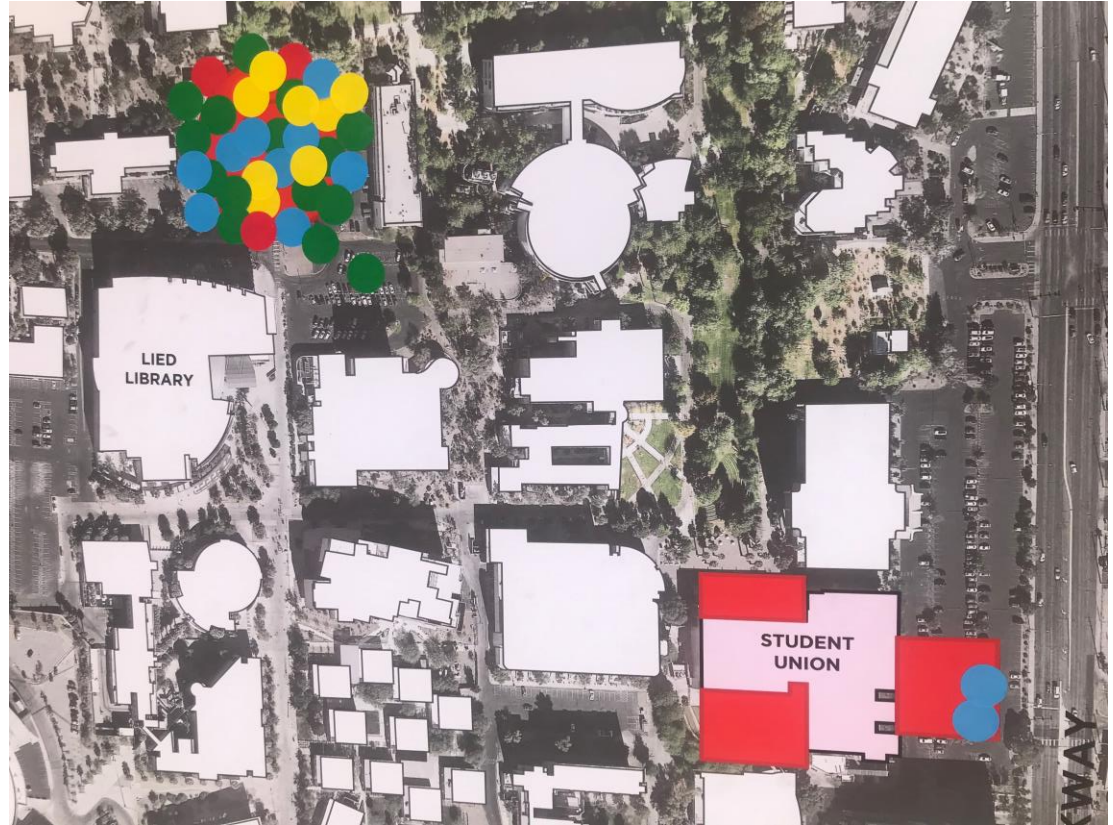
Safety

Multiculturalism



Big Question

Where should new dining and social spaces be located?

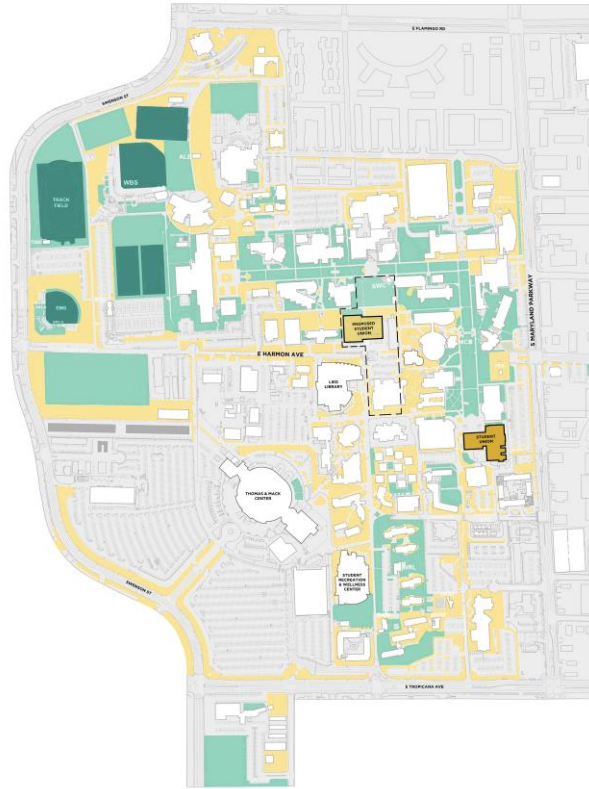


Engagement Matters

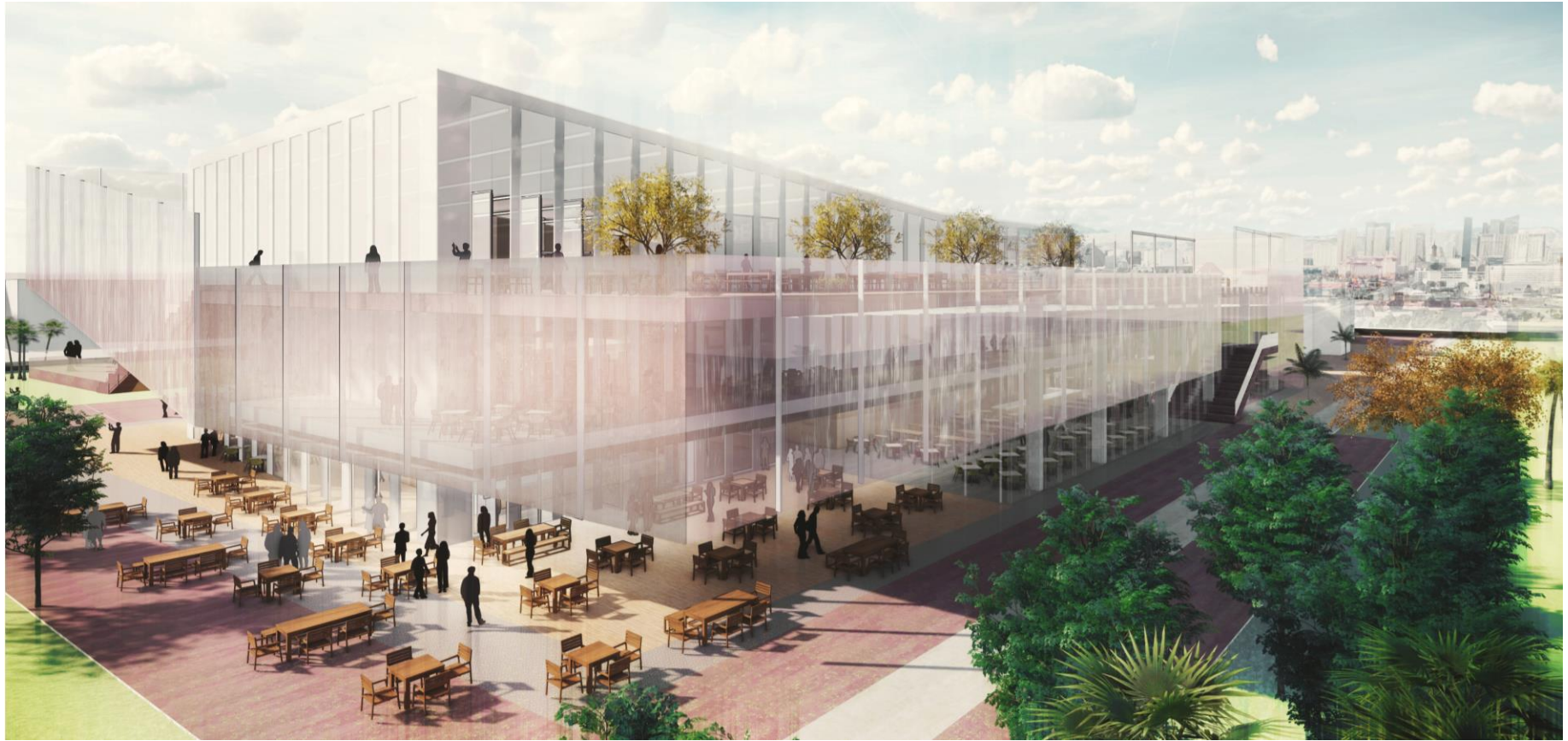
Research Reveals

Leverage Dining

Inclusion Strategies







Engagement Matters

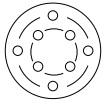
Research Reveals

Leverage Dining

Inclusion Strategies

HIERARCHY OF ENVIRONMENTAL DESIGN

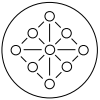
Strange & Banning
2015



COMMUNITY

Full Membership

Students experience shared emotional connections, reciprocity in relationships, common purpose in and personal affirmation from the organization



INVOLVEMENT

Participation, Engagement, Role-Taking

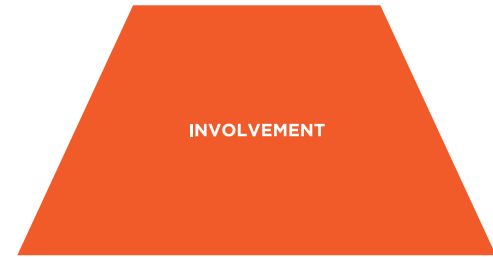
Variety of ways students are involved in their own educational experiences (e.g. interacting with peers, joining organizations) and the university is supportive (e.g. space type and scale, building artifacts and symbols)



SAFETY and INCLUSION

Sense of belonging and security

Range of physical and emotional factors that affect students' feelings of personal and emotional safety, and which signal they "matter"



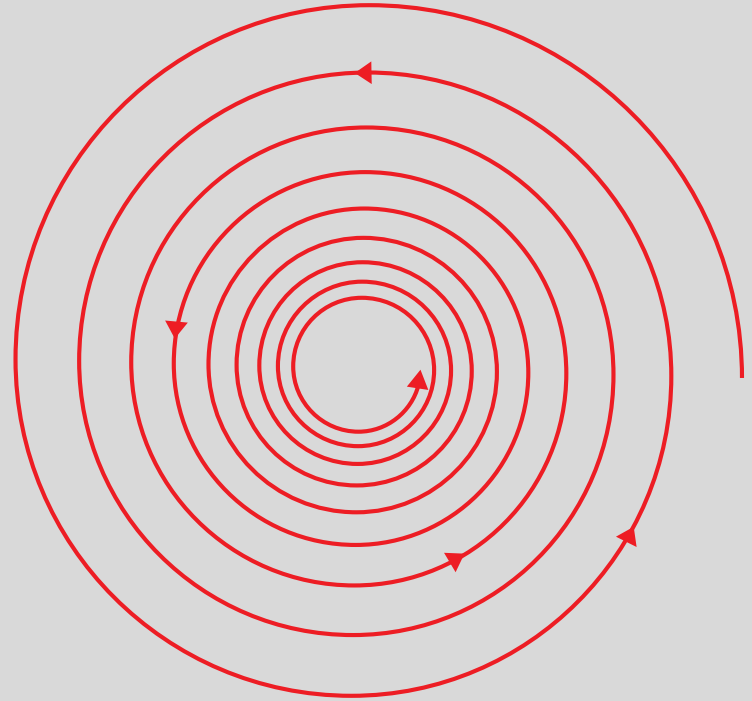
SAFETY and INCLUSION

**INCLUSION
PLACEMAKING**

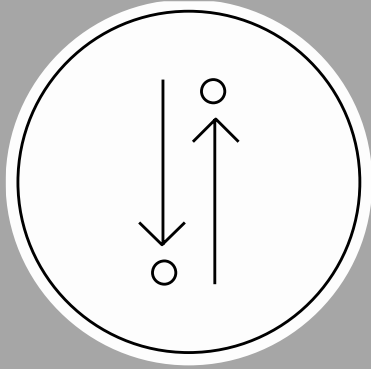


INVOLVEMENT

**PERIPHERAL
PARTICIPATION**

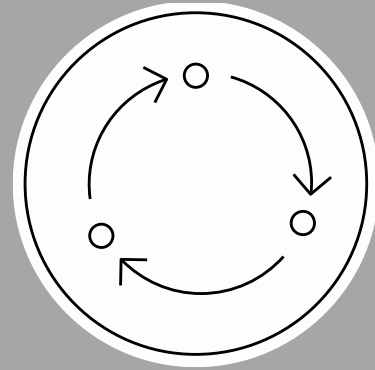


COMMUNITY



TRANSACTIONAL

VS



RELATIONAL

TRANSACTIONAL



RELATIONAL



**Marquette
University**

with Ricca
Design Studios

Cura Personalis

**Marquette University
The Commons**

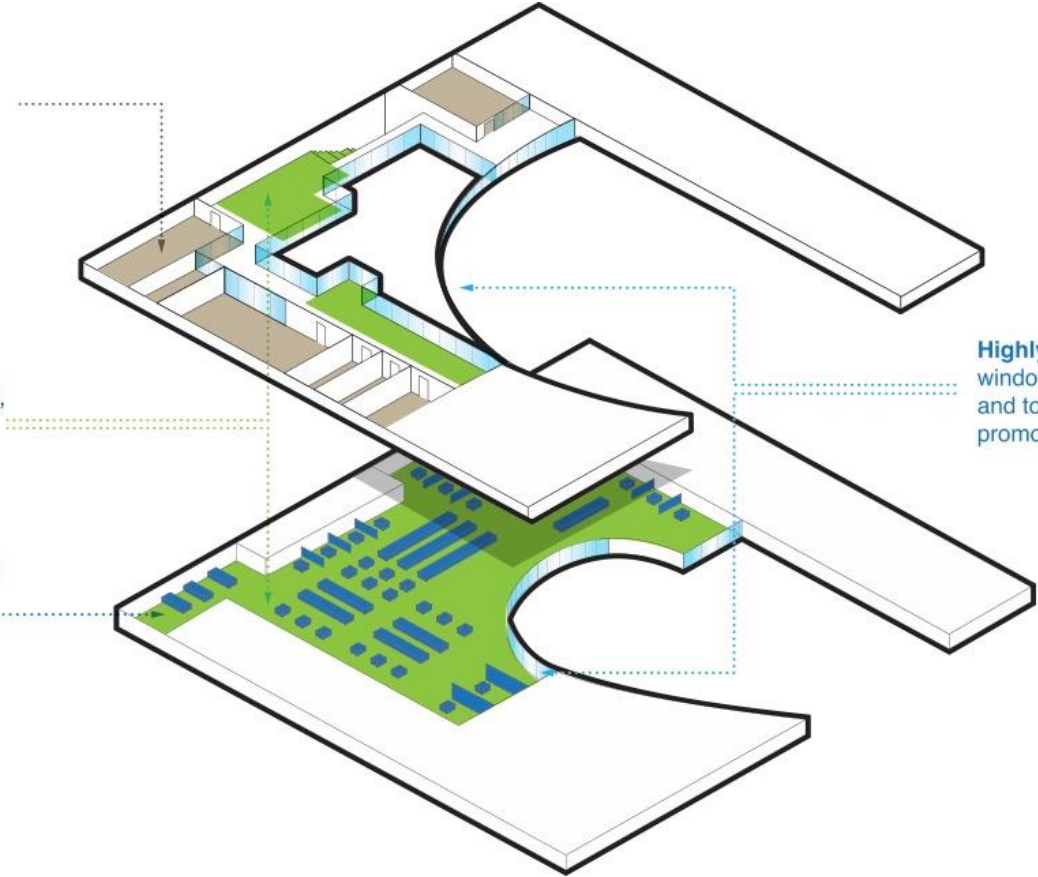


The Layout

Thin space
Provides separation
with large windows
to allow peripheral
participation

Thick space
highly programmable,
promotes peripheral
participation

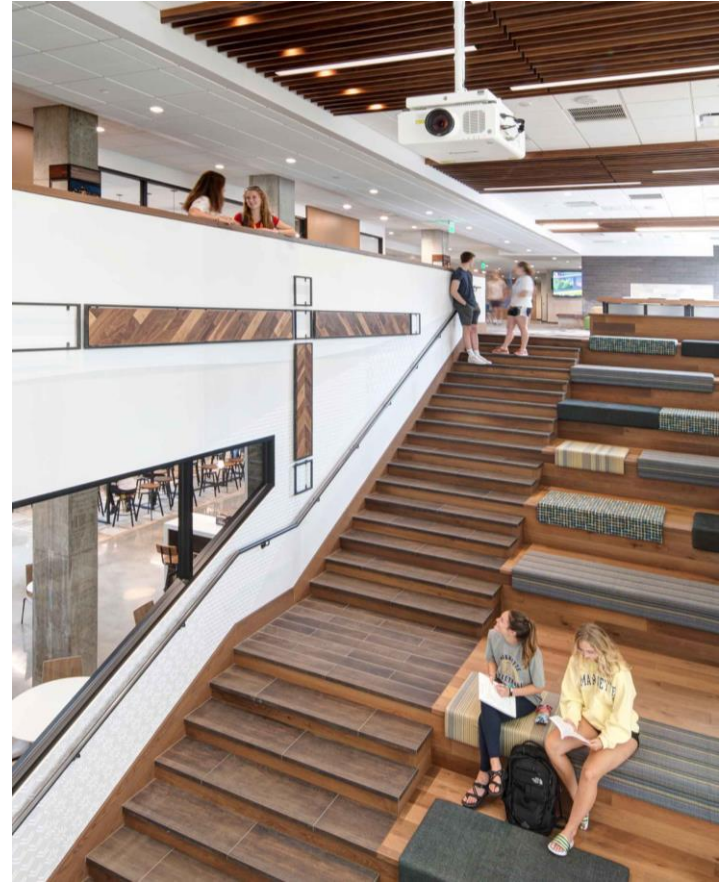
A seat for everyone
A variety of seating
for extroverts and
introverts

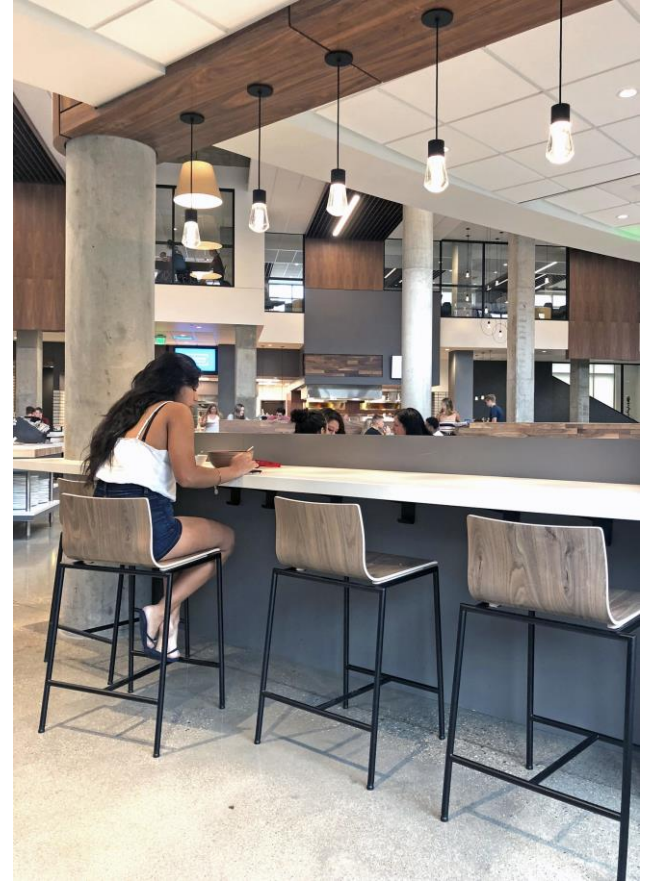


Second Floor

Highly visible
windows into rooms
and to the floor below
promotes security

First Floor





Purdue University

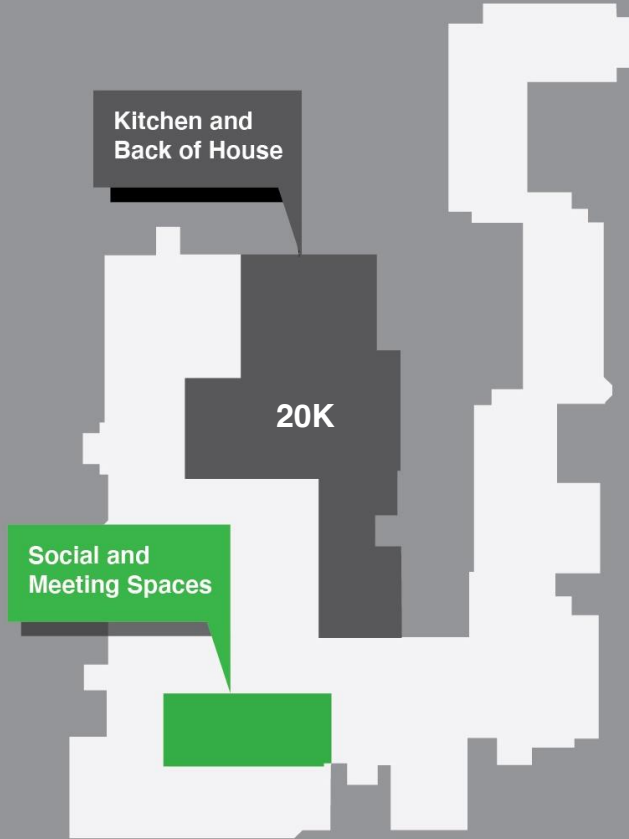
with Cini-Little,
Aramark, and
Tipton Assoc.

Unlocking Hidden Value

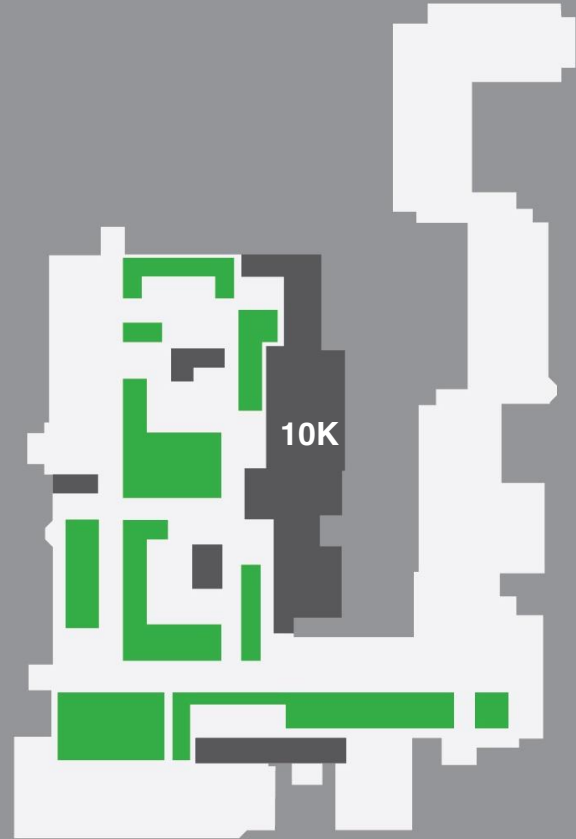




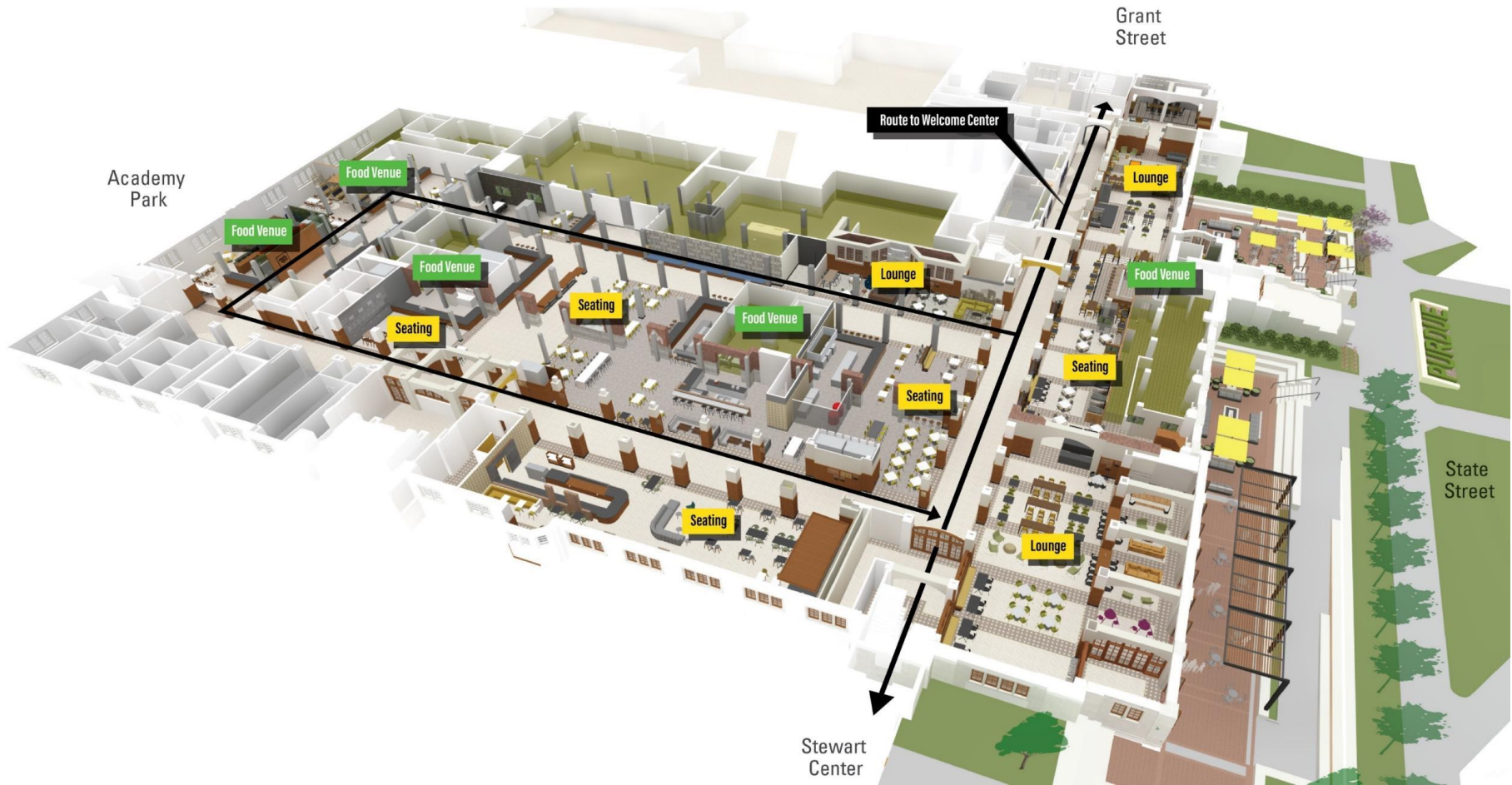




Before



After





**University
of**

Wisconsin

With Ricca Design
Studios

**Community
Impact**

